

CBRE

AVAILABLE NOW

±11,834 SF FOR LEASE

PARKING OPPORTUNITY WITH OFFICE



100 CORPORATE DRIVE

MAHWAH, NEW JERSEY 07430 USA

100CORPORATEDRIVE.COM

Owned by  **LINK**

PROPERTY DETAILS



±102,269 SF
Building Total



134
Car Parking



±11,834 SF
Available Office Space



Immediate
Occupancy

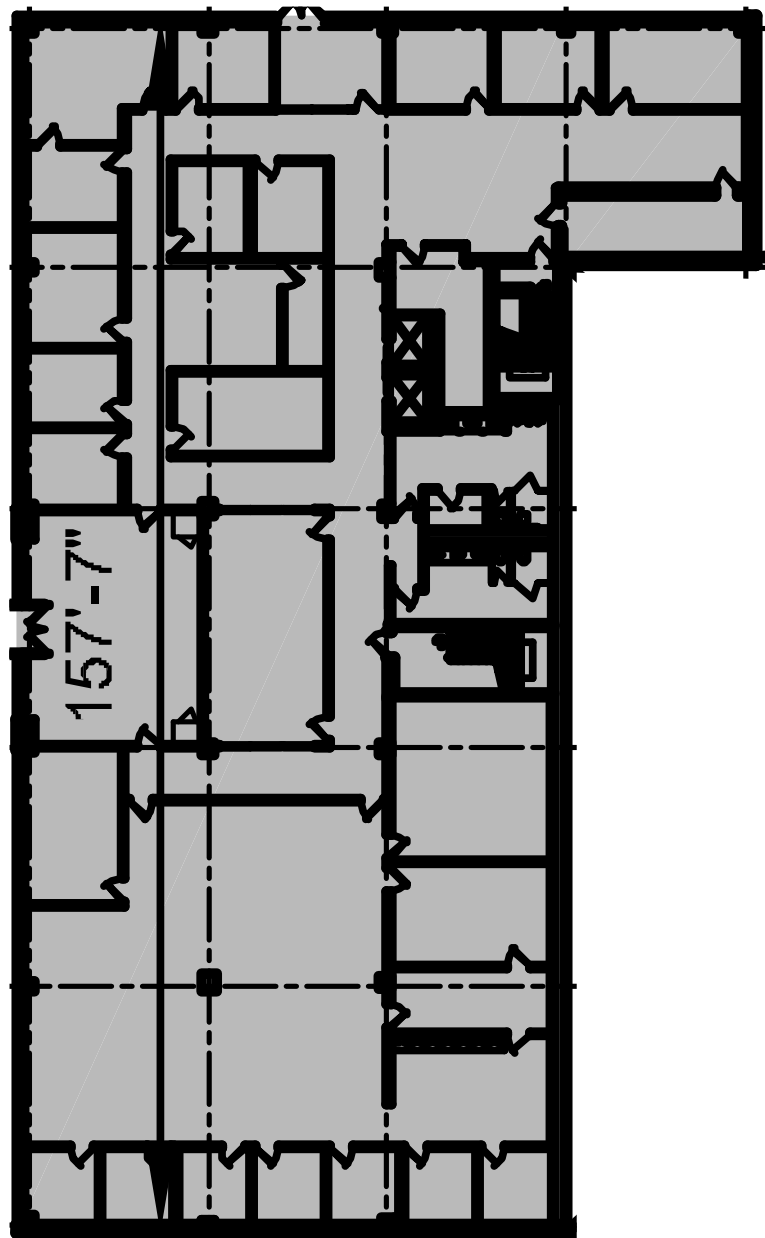


8.15 Acres
Land Area

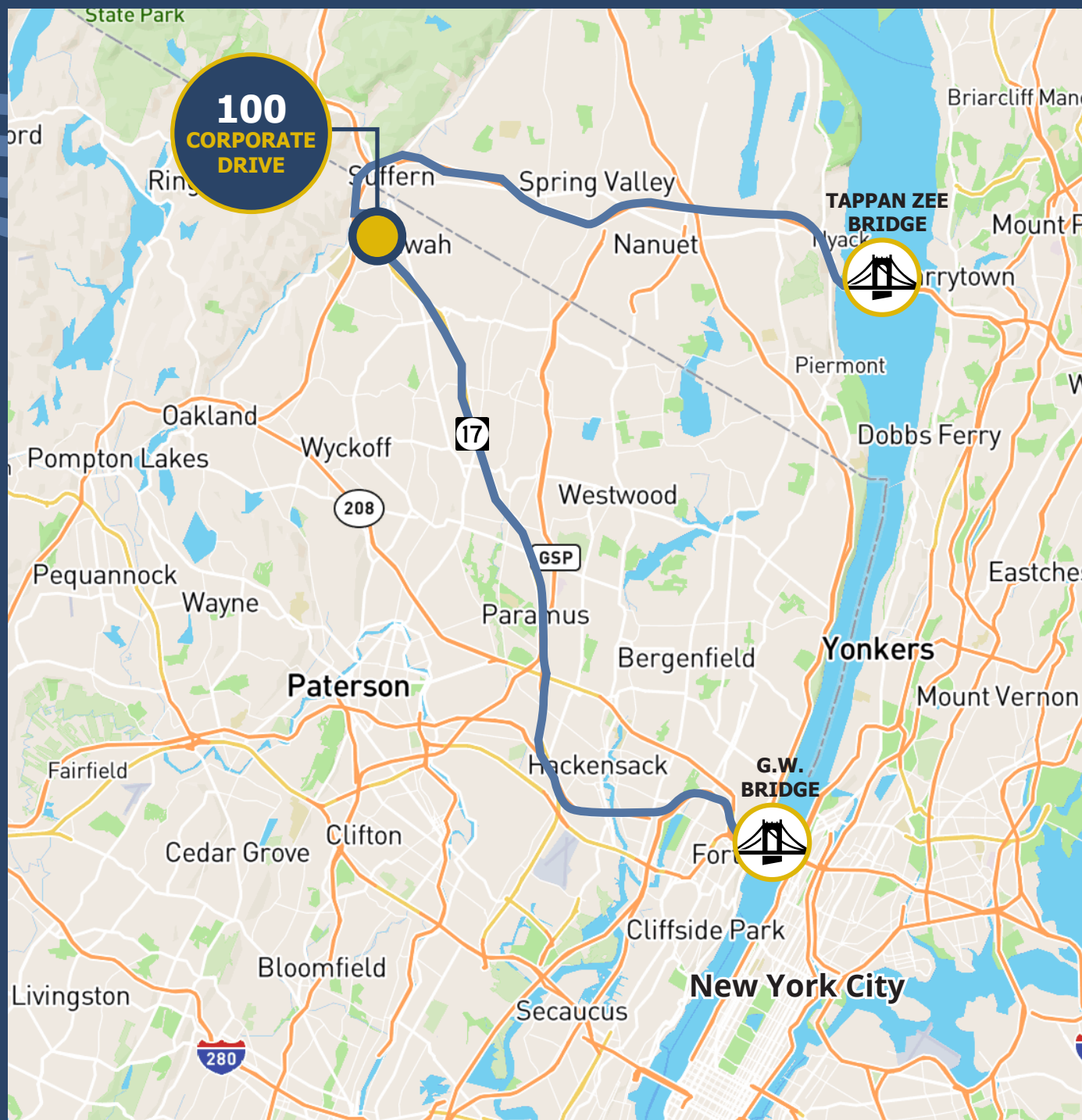


FLOOR PLAN

1ST FLOOR 11,834 SF OFFICE



KEY DISTANCES



Located off of Route 17

with proximity to Route 287, the Garden State Parkway and the New York State Thruway.

20 minutes to the Tappan Zee Bridge

30 minutes to the G. W. Bridge

100CORPORATEDRIVE.COM



Owned by  LINK

±11,834 SF FOR LEASE

PARKING OPPORTUNITY WITH OFFICE

100 CORPORATE DRIVE

MAHWAH, NEW JERSEY 07430 USA

THOMAS F. MONAHAN

Vice Chairman

o +1 201 712 5610

c +1 973 568 6614

thomas.monahan@cbre.com

LARRY SCHIFFENHAUS

Executive Vice President

o +1 201 712 5616

c +1 201 532 5092

larry.schiffenhaus@cbre.com

BRIAN GOLDEN

Executive Vice President

o +1 201 712 5607

c +1 732 284 8451

brian.golden@cbre.com

ANDREW GUNST

Senior Associate

o +1 201 712 5649

c +1 908 642 1415

andrew.gunst@cbre.com

EVAN BERNARD

Vice President

o +1 201 712 5646

c +1 973 525 7886

evan.bernard@cbre.com

CBRE

© 2026 CBRE, Inc. All rights reserved. This information has been obtained from sources believed reliable but has not been verified for accuracy or completeness. CBRE, Inc. makes no guarantee, representation or warranty and accepts no responsibility or liability as to the accuracy, completeness, or reliability of the information contained herein. You should conduct a careful, independent investigation of the property and verify all information. Any reliance on this information is solely at your own risk. CBRE and the CBRE logo are service marks of CBRE, Inc. All other marks displayed on this document are the property of their respective owners, and the use of such marks does not imply any affiliation with or endorsement of CBRE. Photos herein are the property of their respective owners. Use of these images without the express written consent of the owner is prohibited.

